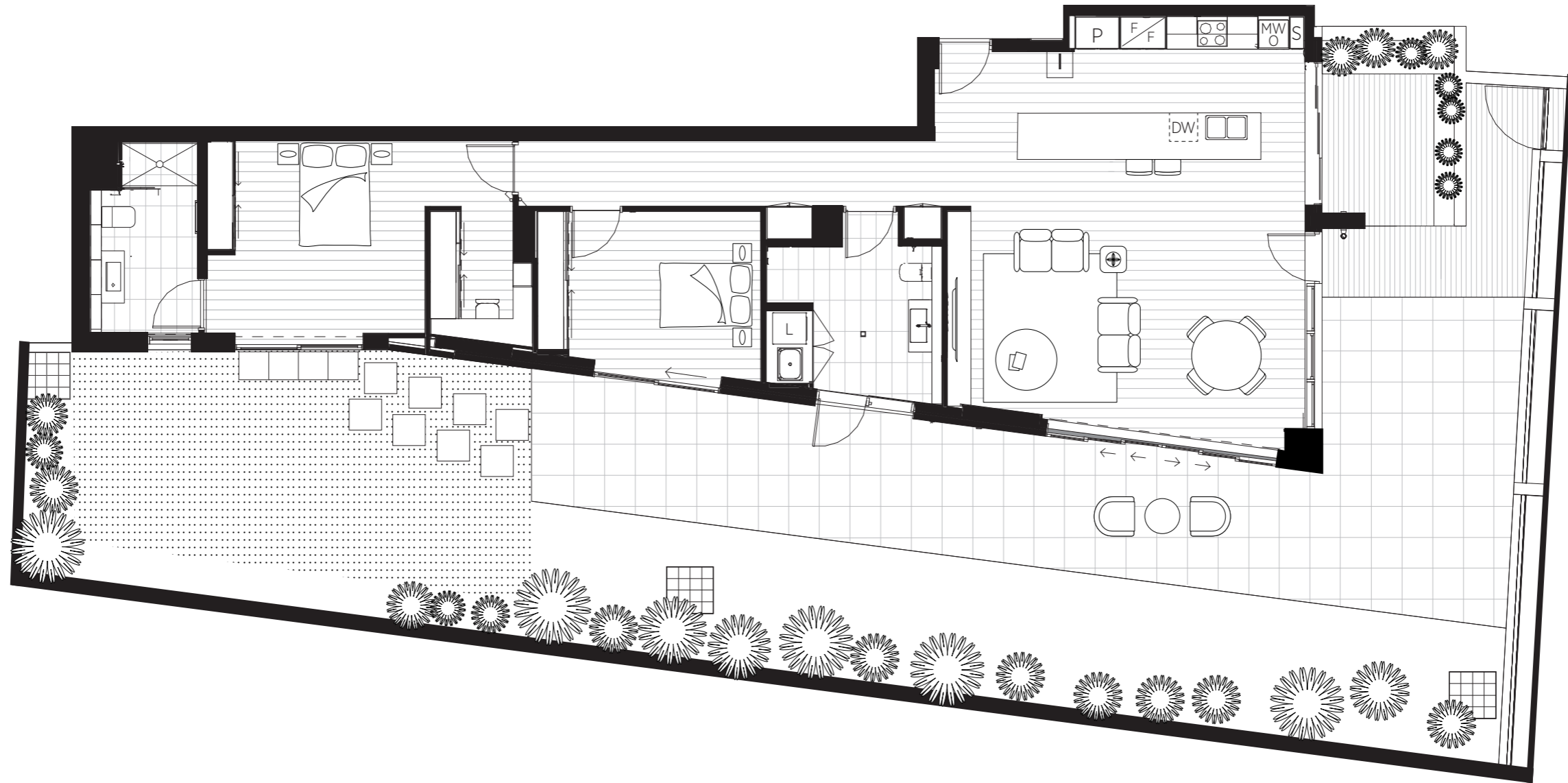


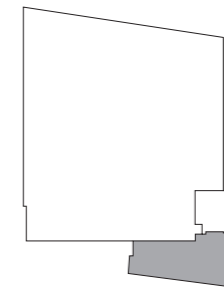


Apartment LG02

Internal: 135.8m² External: 192.9m² **Total: 328.7m²**
 Colour scheme: Fitzroy



Lower Ground Floor



0M Scale 1:100@A3 5M

EUROPA ON ALMA
 BOLTON CLARKE

Europa on Alma. 31-39 Alma Road St Kilda VIC 3182
 Display Suite. 101 St Kilda Road St Kilda VIC 3182
 Phone. 1300 416 262 Web. europaonalma.com.au

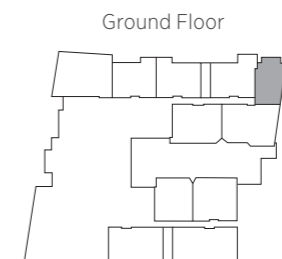
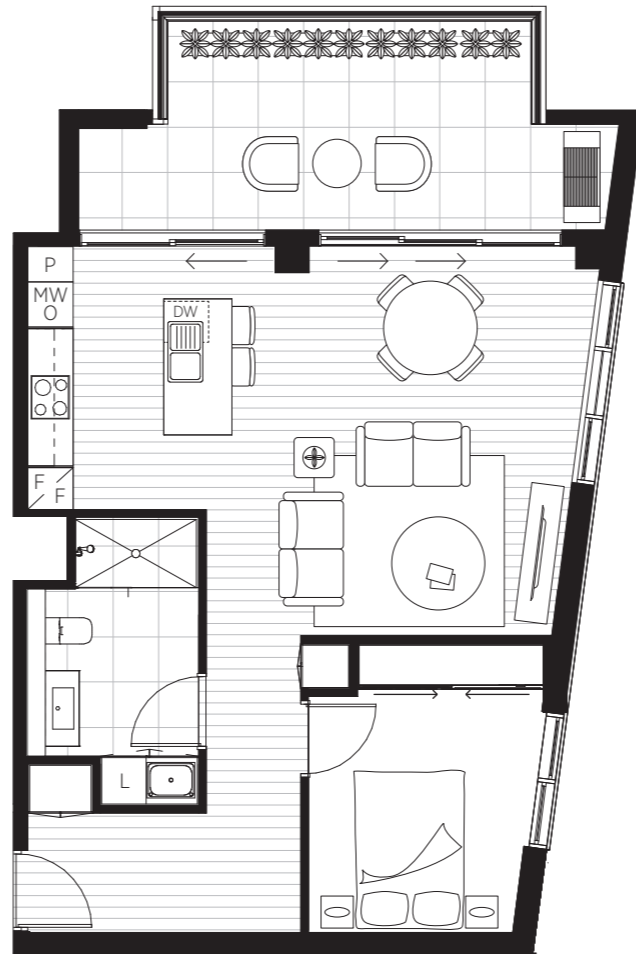
Plans must be printed at 100% size for accurate scale.

Europa on Alma is currently under development. These plans are provided for illustrative purposes and changes may be made during development.



Apartment G05

Internal: 69.9m² External: 20m² **Total: 89.9m²**
 Colour scheme: Acland



0M Scale 1:100@A3 5M

EUROPA ON ALMA
 BOLTON CLARKE

Europa on Alma. 31-39 Alma Road St Kilda VIC 3182
 Display Suite. 101 St Kilda Road St Kilda VIC 3182
 Phone. 1300 416 262 Web. europaonalma.com.au

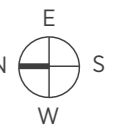
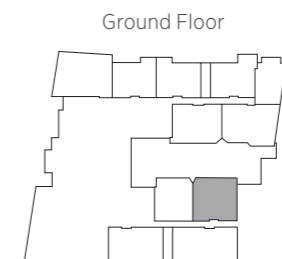
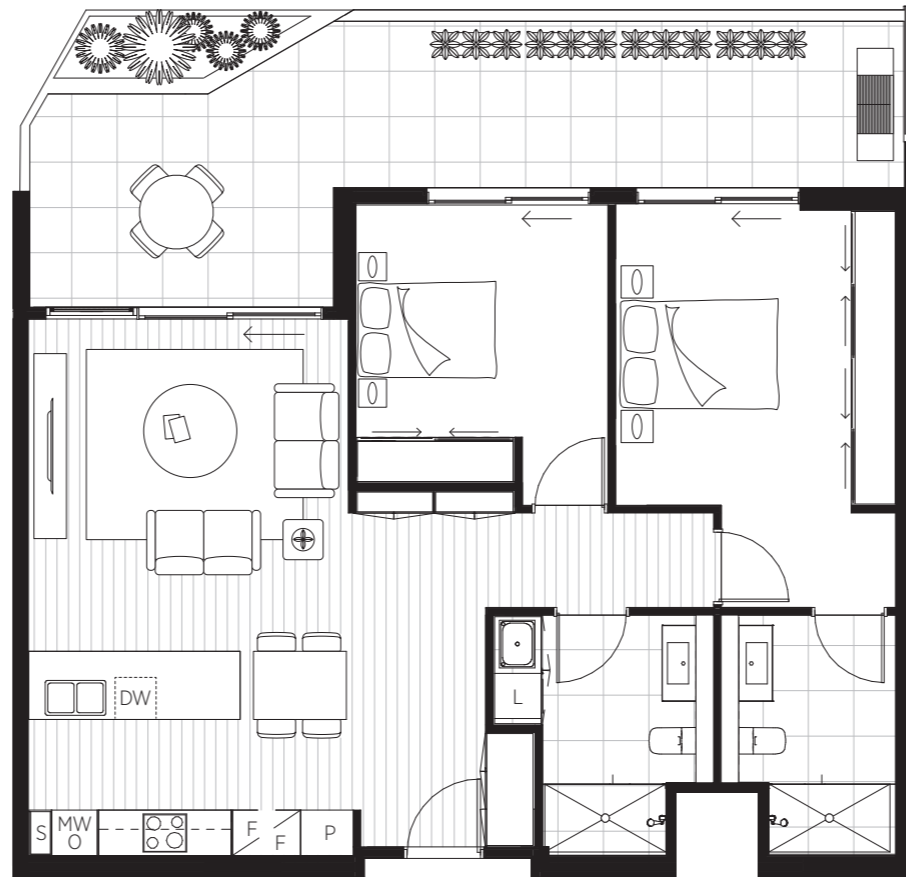
Plans must be printed at 100% size for accurate scale.

Europa on Alma is currently under development. These plans are provided for illustrative purposes and changes may be made during development.



Apartment G09

Internal: 101.1m² External: 33.4m² **Total: 134.5m²**
 Colour scheme: Acland



0M Scale 1:100@A3 5M

EUROPA ON ALMA
 BOLTON CLARKE

Europa on Alma. 31-39 Alma Road St Kilda VIC 3182
 Display Suite. 101 St Kilda Road St Kilda VIC 3182
 Phone. 1300 416 262 Web. europaonalma.com.au

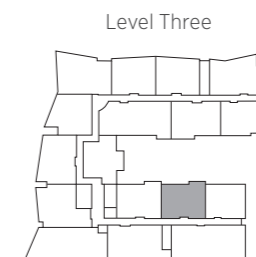
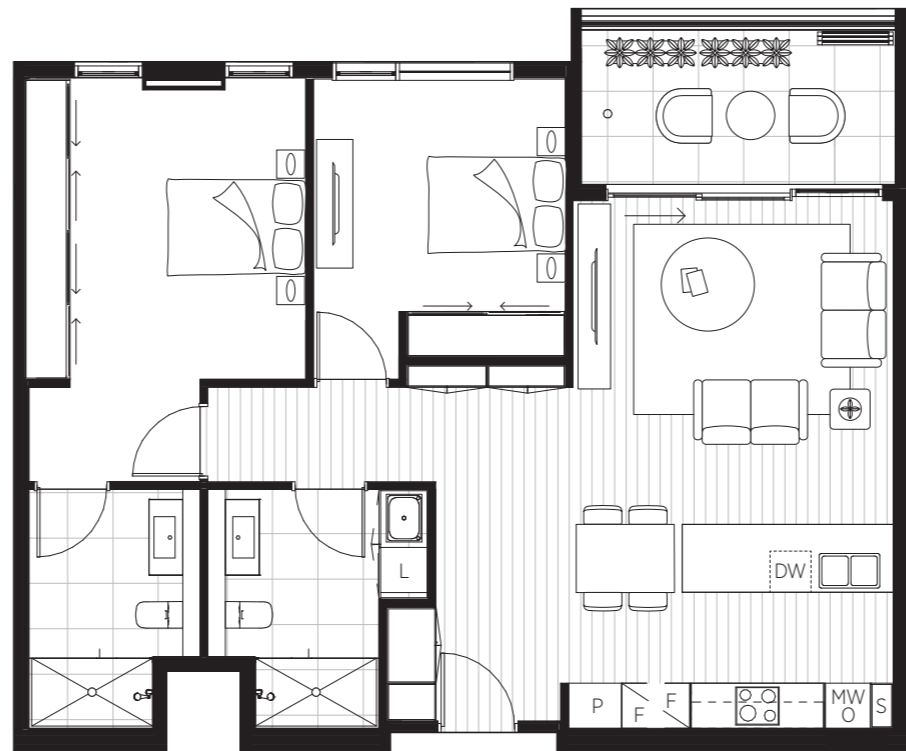
Plans must be printed at 100% size for accurate scale.

Europa on Alma is currently under development. These plans are provided for illustrative purposes and changes may be made during development.



Apartment 311

Internal: 99.8m² External: 10.2m² **Total: 110m²**
 Colour scheme: Fitzroy



0M Scale 1:100@A3 5M

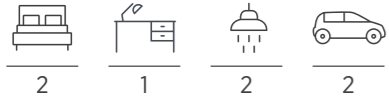
Europa on Alma is currently under development. These plans are provided for illustrative purposes and changes may be made during development.

EUROPA ON ALMA
 BOLTON CLARKE

Europa on Alma. 31-39 Alma Road St Kilda VIC 3182
Display Suite. 101 St Kilda Road St Kilda VIC 3182
Phone. 1300 416 262 **Web.** europaonalma.com.au

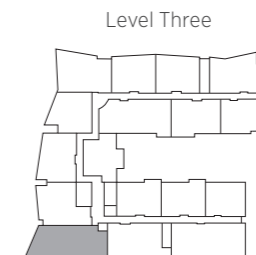
Plans must be printed at 100% size for accurate scale.

BOCL3826_26 July 2021



Apartment 315

Internal: 136.4m² External: 34.6m² **Total: 171m²**
 Colour scheme: Fitzroy



0M Scale 1:100@A3 5M

BOCL3826_26 July 2021

<p>EUROPA ON ALMA BOLTON CLARKE</p>	<p>Europa on Alma. 31-39 Alma Road St Kilda VIC 3182 Display Suite. 101 St Kilda Road St Kilda VIC 3182 Phone. 1300 416 262 Web. europaonalma.com.au</p>
--	--

Plans must be printed at 100% size for accurate scale.

Europa on Alma is currently under development. These plans are provided for illustrative purposes and changes may be made during development.